

LED FLUORESCENT LAMP (OR LIGHT) 日光灯



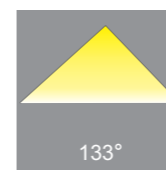
HR6601 / HR6611 / HR6621

Product Features :

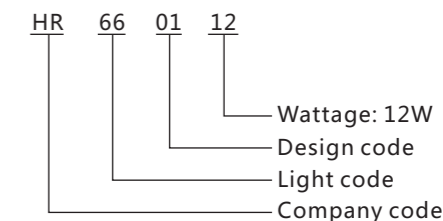
- Extrusion moulding enclosure, anodization treatment for light surface, interface can be compatible with traditional lamp tube, tight and beautiful structure.
- Surface mounting type for LED particles, low energy consumption, high luminous efficiency, low power consumption.
- High-quality aluminium alloy extrusions, anodization treatment, diffuser with diffusant, well-distributed light, anti-vibration, no cracking, no security risk.
- Built-in constant current drive power isolated inside the lamp tube by plastic enclosure can pass the high voltage test, which is also compatible and free of interference.
- Can be assembly installed, no dark space.

Application Area :

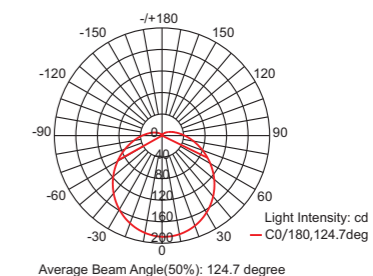
- Widely used in office building, stairs, passageway, hotel, home lighting, mall, subway etc..



Model :



Light Distribution Curve :



LED FLUORESCENT LAMP (OR LIGHT)

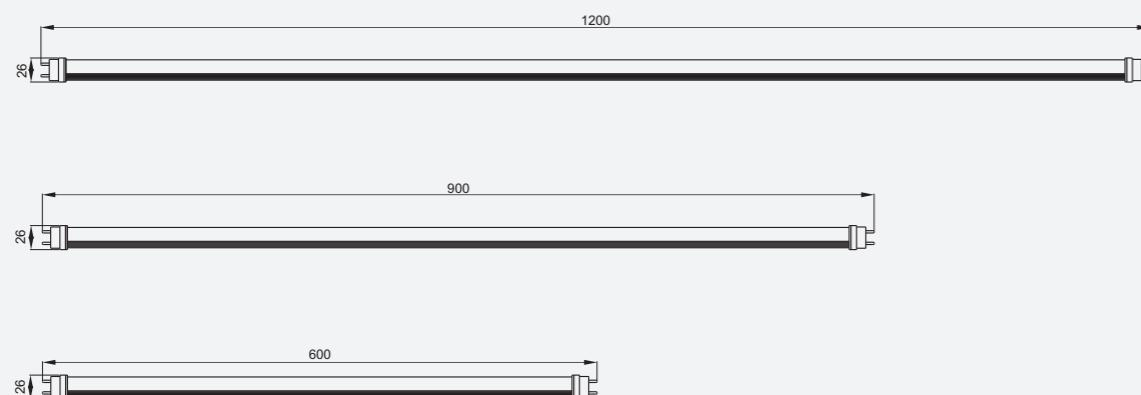


Product model	HR6601-6/9W	HR6601-12/15W	HR6601-16/18W
LED quantity	60pcs / 90pcs	120pcs / 150pcs	160pcs / 180pcs
Rated power	6W / 9W	12W / 15W	16W / 18W
Input voltage	AC100-240V 50/60Hz		
Power factor	≥0.95		
Total harmonic distortion (THD)	≤20%		
Color temperature(K)	6000K/4000K/3000K		
Color rendering index(Ra)	≥75		
LED illumination efficacy(Lm/W)	130/120/110		
Initial luminous lux(Lm)	600/570/540 900/855/810	1200/1140/1080 1500/1425/1350	1600/1520/1440 1800/1710/1620
Ambient temperature	-25°C ~ +55°C		
Ambient humidity	10%-90%		
Working life	>50000H		
Gross weight(Kg)	0.2	0.3	0.4

HR6601-T8 LED灯管

6W / 9W / 12W / 15W / 16W / 18W

Product Dimension



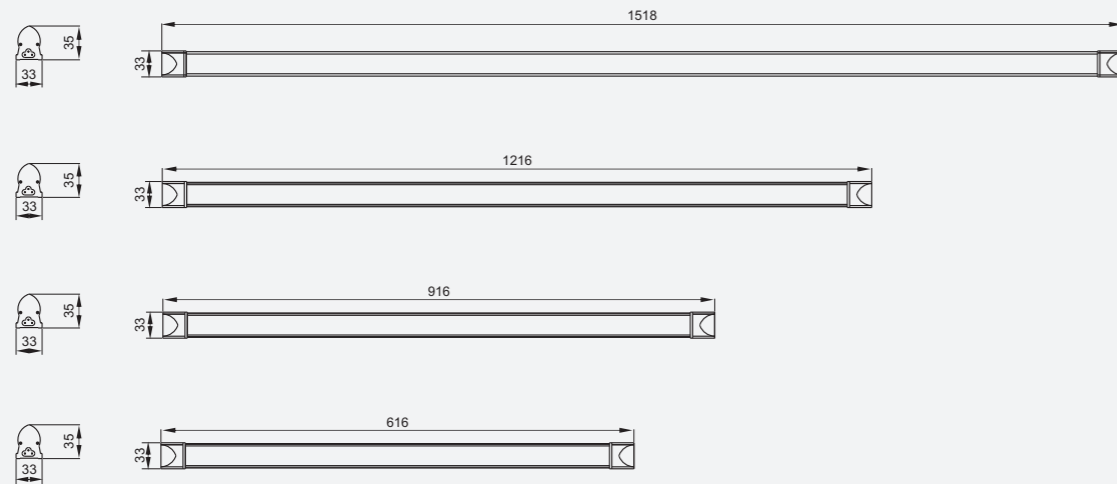


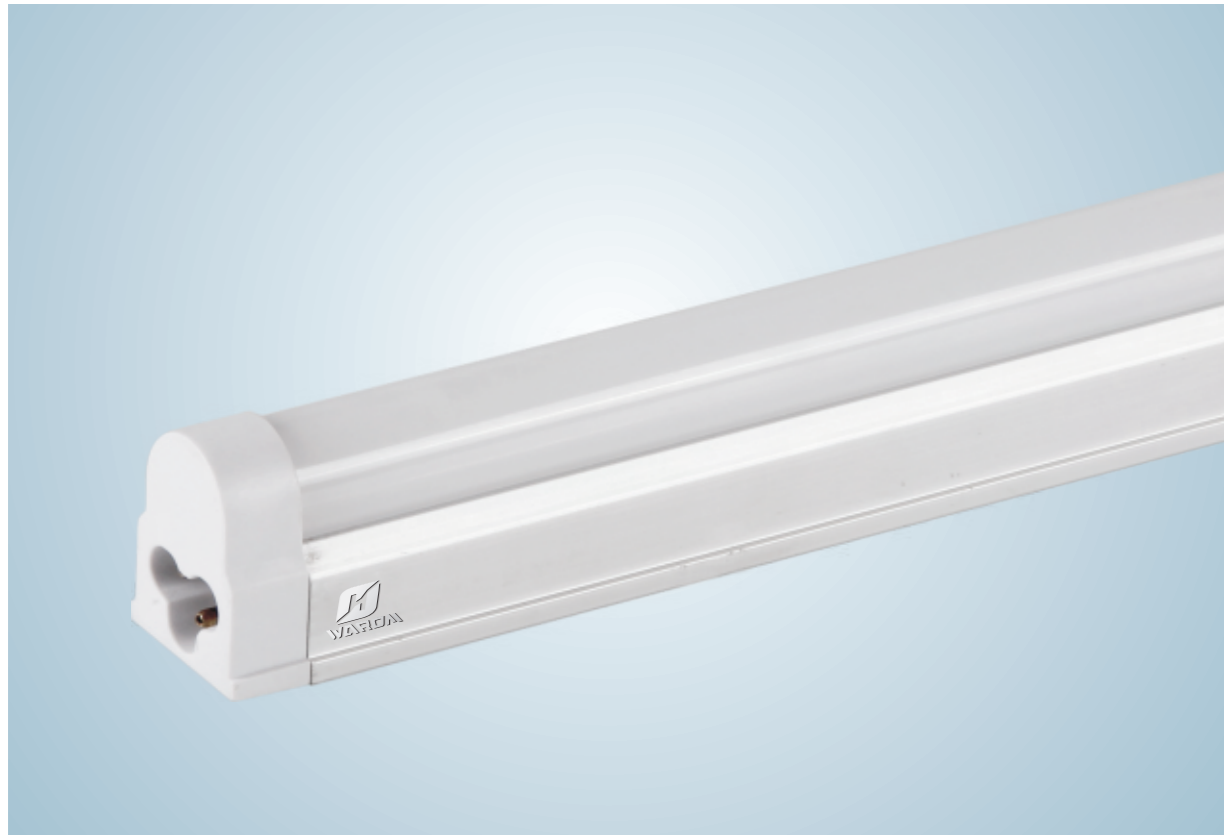
Product model	HR6611-6W	HR6611-10W	HR6611-15W	HR6611-30W
LED quantity	60pcs	100pcs	150pcs	300pcs
Rated power	6W	10W	15W	30W
Input voltage	AC100-240V 50/60Hz			
Power factor	≥0.95			
Total harmonic distortion (THD)	≤20%			
Color temperature(K)	6000K/4000K/3000K			
Color rendering index(Ra)	≥75			
LED illumination efficacy(Lm/W)	130/120/110			
Initial luminous lux(Lm)	600/570/540	1000/950/900	1500/1425/1350	3000/2850/2700
Ambient temperature	-25°C ~ +55°C			
Ambient humidity	10%-90%			
Working life	>50000H			
Gross weight(Kg)	0.4	0.6	0.8	1.0

HR6611-T8 LED 一体化灯

6W / 10W / 15W / 30W

Product Dimension





Product model	HR6621-7W	HR6621-14W
LED quantity	70pcs	140pcs
Rated power	7W	14W
Input voltage	AC100-240V 50/60Hz	
Power factor	≥0.95	
Total harmonic distortion (THD)	≤20%	
Color temperature(K)	6000K/4000K/3000K	
Color rendering index(Ra)	≥75	
LED illumination efficacy(Lm/W)	130/120/110	
Initial luminous lux(Lm)	700/665/630	1400/1330/1260
Ambient temperature	-25°C ~ +55°C	
Ambient humidity	10%-90%	
Working life	>50000H	
Gross weight(Kg)	0.2	0.3

HR6621-T5 LED一体化灯

7W / 14W

Product Dimension

