

# LED GUARDRAIL LAMPS

## LED GUARDRAIL LAMPS 护栏灯



**HR2201 / HR2231 / HR2251 / HR2271**  
4W / 6W / 8W / 12W / 24W

### Product Features :

- Light enclosure is made of aluminium alloy 6063, anodic ecrú treatment, fastener is made of stainless steel 304 .
- Application of CREE LED particles, high luminous efficiency, superior color rendering index, friendly environmental.
- Professional polarized design, direct beam, no glare, can meet road lighting requirements.
- External isolated constant current drive power, safe and no interference, be able to install and maintain rapidly.
- Several patents for appearance and locking device, in accordance with steel conduit radian, more convenient flush mounting type.
- Tight weatherproof structure, take-up locking mode, more outstanding performance.

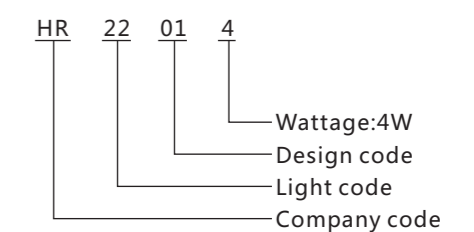
### Light Material :

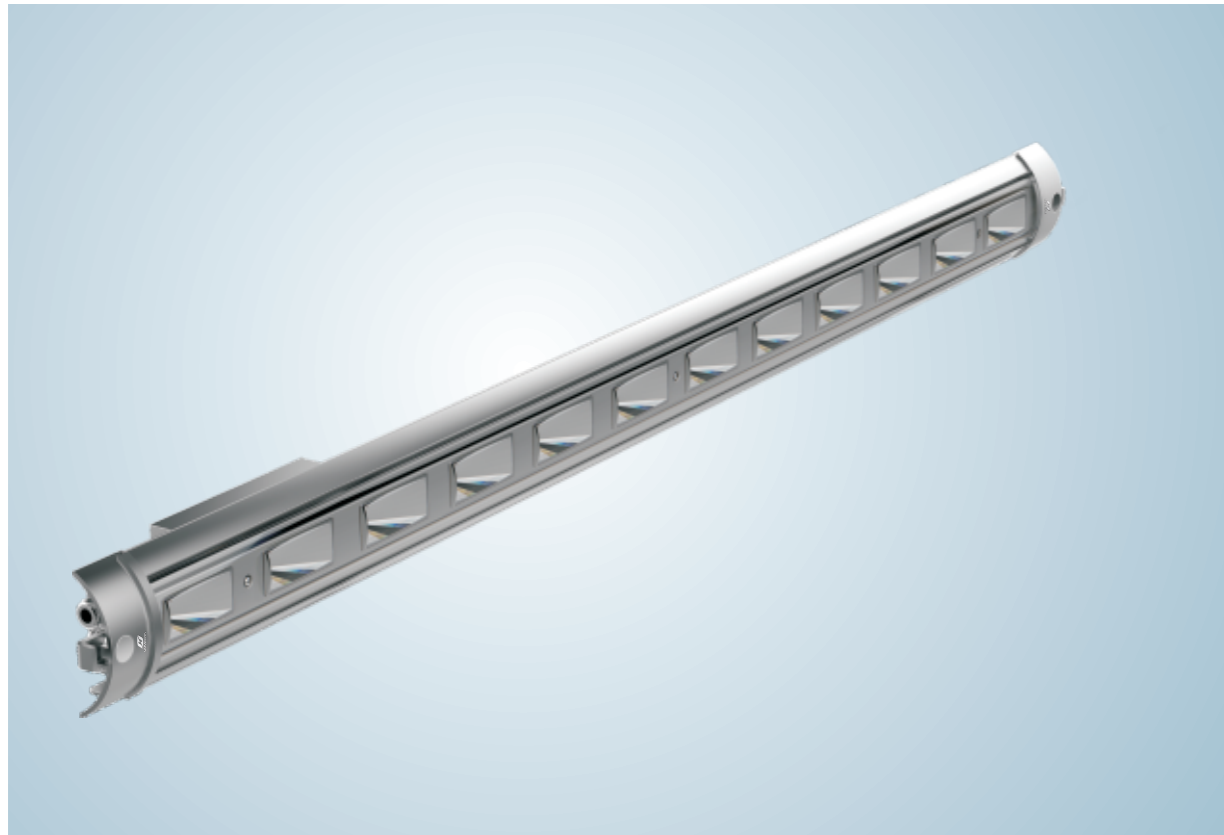
- External steel conduit , galvanized carbon steel lamp holder, powder coated polyester, extrusion light body.

### Application Area :

- Widely used in government lighting project, railway station, airport, subway station, stadium, viaduct overpass, highway etc..

### Model :





Product parameter :

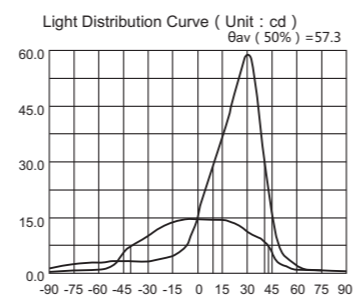
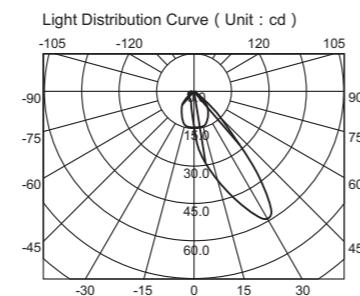
Product model	HR2201-4W	HR2201-6W	HR2201-8W	HR2201-12W	HR2201-24W
Rated power	4W/6W/8W/12W/24W				
Input voltage	AC100-240V 50/60Hz				
Power factor	≥0.95				
Total harmonic distortion(THD)	< 20%				
Color temperature(K)	5700-6300K/2800-3200K				
Color rendering index ( Ra )	≥80				
LED illumination efficacy(Lm/W)	130/110				
Initial luminous lux ( Lm )	4W	6W	8W	12W	24W
	320	480	640	1080	2280
Ambient temperature	-25°C ~ +55°C				
Ambient humidity	10%-90%				
Working life	> 50000H				
Protection degree	IP65				
Mounting height	1~3m				
Net weight	2.0				
Gross weight	3.0				
Dimension of light fittings	1198×93×88mm				
Packing dimension	1280×380×243mm				

## HR2201 LED GUARDRAIL LAMPS

4W / 6W / 8W / 12W / 24W



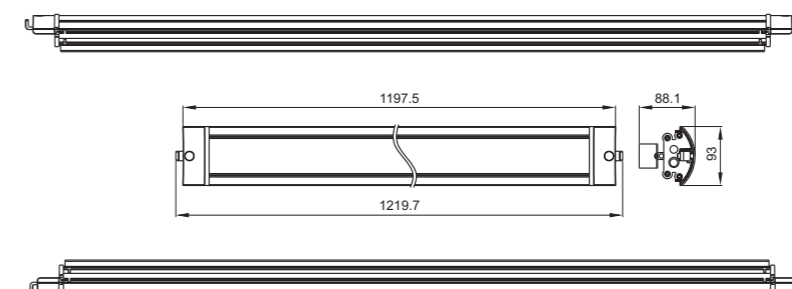
Light Distribution Curve:



Patented Design :



Product dimension chart :



Locking type is patented , convenient to mounting



## HR2231 LED GUARDRAIL LAMPS

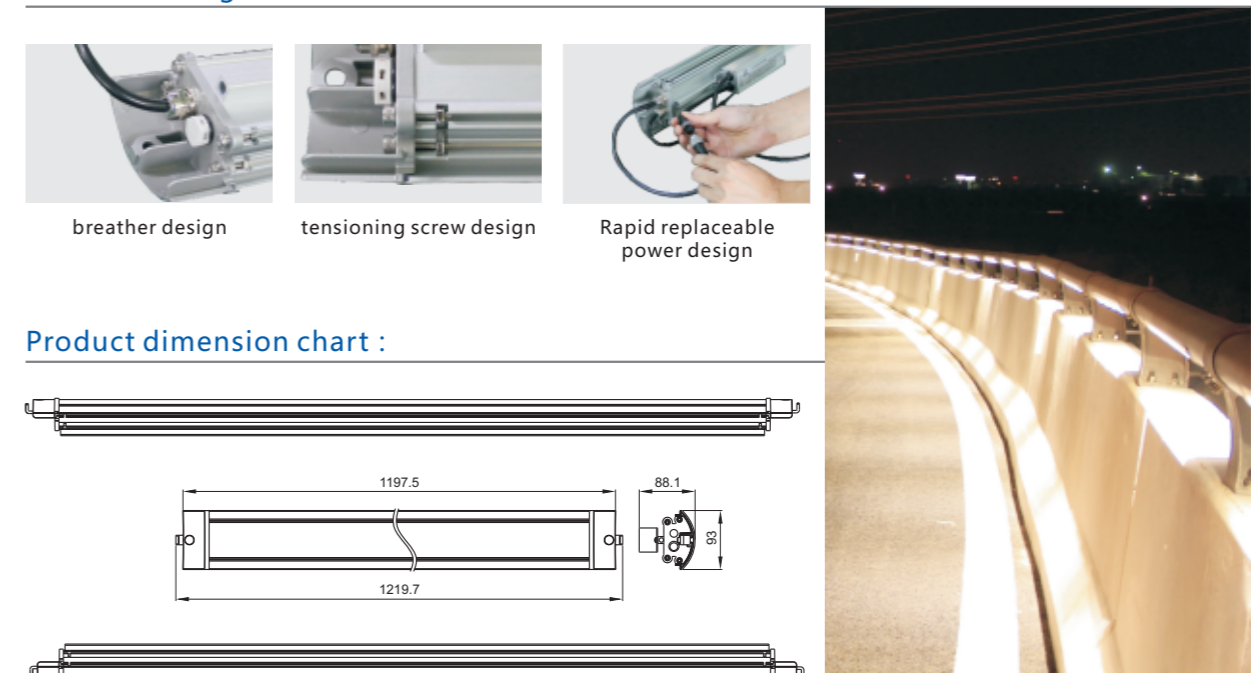
4W / 6W / 8W / 12W / 24W

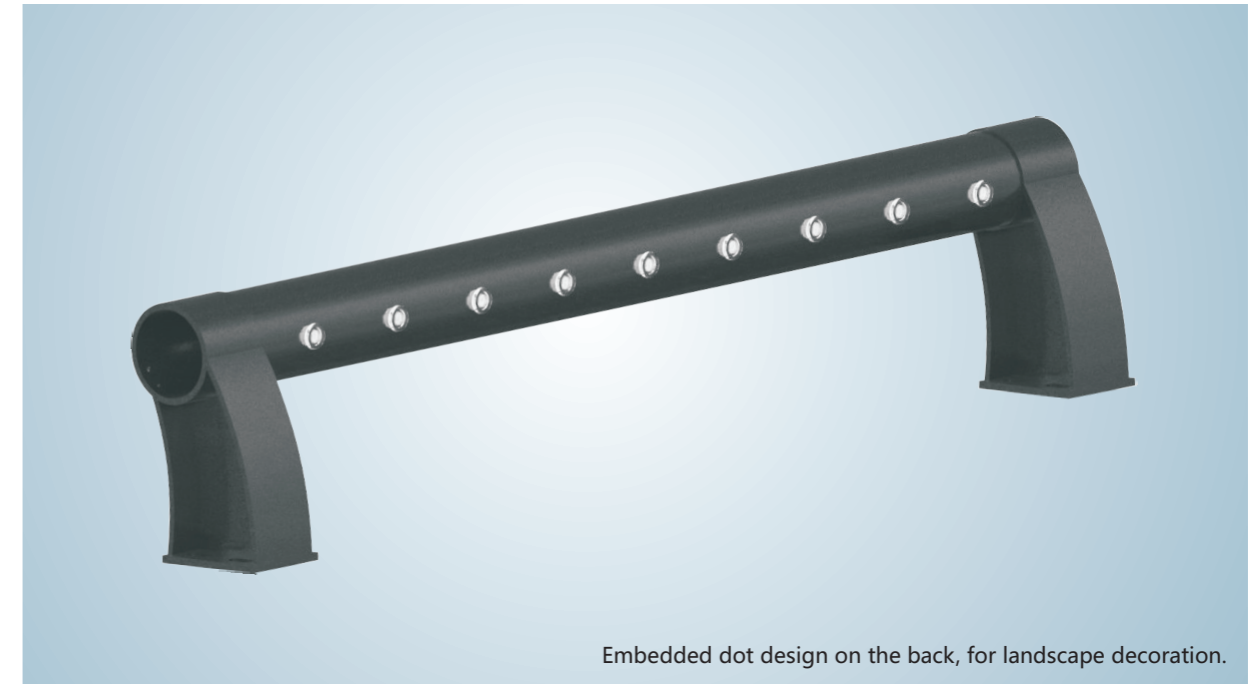


产品参数 :

Product model	HR2231-4W	HR2231-6W	HR2231-8W	HR2231-12W	HR2231-24W
Rated power	4W/6W/8W/12W/24W				
Input voltage	AC100-240V 50/60Hz				
Power factor	≥0.95				
Total harmonic distortion(THD)	< 20%				
Color temperature(K)	5700-6300K/2800-3200K				
Color rendering index ( Ra )	≥80				
LED illumination efficacy(Lm/W)	130/110				
Initial luminous lux ( Lm )	4W	6W	8W	12W	24W
	320	480	640	1080	2280
Ambient temperature	-25°C ~ +55°C				
Ambient humidity	10%-90%				
Working life	> 50000H				
Protection degree	IP65				
Mounting height	1~3m				
Net weight	2.0				
Gross weight	3.0				
Dimension of light fittings	1198×93×88mm				
Packing dimension	1280×380×243mm				

Patented Design :



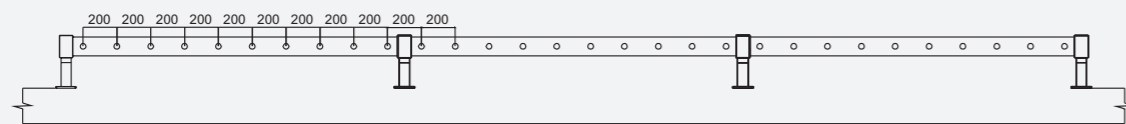
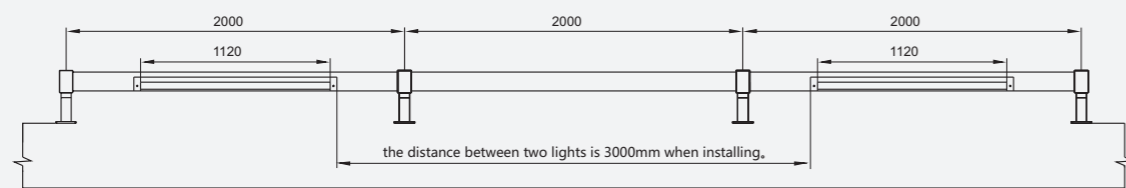
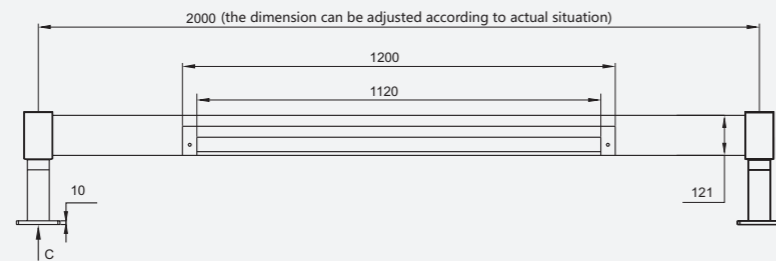


Embedded dot design on the back, for landscape decoration.

### HR2251 LED GUARDRAIL LAMPS

4W / 6W / 8W / 12W / 24W

#### Installation Instruction



### HR2271 LED GUARDRAIL LAMPS

4W / 6W / 8W / 12W / 24W

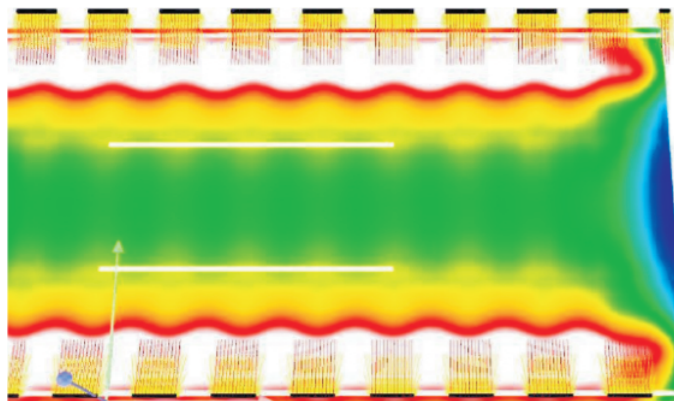
Product Picture and Dimension	Product Model	HR2271
	Rated power	0.5W
	Input voltage	DC24V
	Single LED power	SMD 0.3W(CREE)
	Light life	> 50000H
	LED color	RGB three-in-one discoloration, red, yellow, blue, green, white
	Color effect	chasing, watercourse, 256 grayscale, full color, single color
	Protection degree	IP65
	Electrical safety level	Category III
	Power line	2*1.0mm <sup>2</sup> rubber cable
	Signal line	4*0.5mm <sup>2</sup> signal line
	Controlling method	standard DMX512
	Ambient temperature	-25°C~+55°C

Cast-iron Mounting Soleplate	Product Dimension	Soleplate Flange Dimension

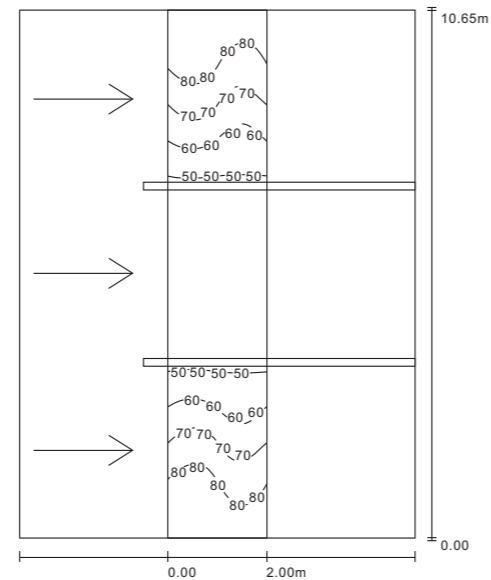
computer simulation of three-lane bridge fence pole light :



According to the actual situation, the mounting height of fence pole light is 1.2m, the width of three-lane is 3x3.55m (actual measurement distance of each lane is 3.55m) =10.65m, simulated for the illumination of three lanes.



Above is the simulation for fence pole lights of three-lane, assuming there are 12 pcs CREE brand LED are used for each fence pole light, the distance between two lights is 2m;

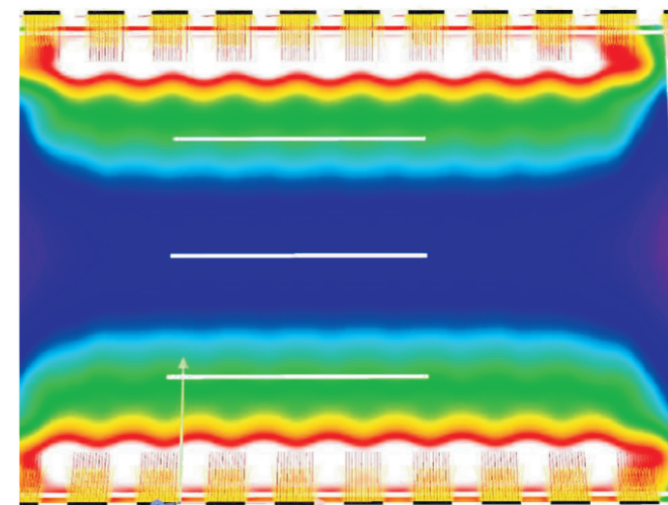


three-lane scene/ equiluminous chart (illuminance)

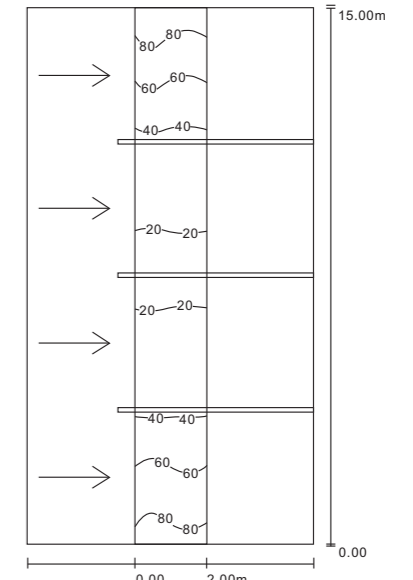
computer simulation of four-lane bridge fence pole light :



According to the actual situation, the mounting height of fence pole light is 1.2m, the width of four-lane is 3x3.75m (actual measurement distance of each lane is 3.75m) =15m, simulated for the illumination of three lanes.



Above is the simulation for fence pole lights of four-lane, assuming there are 12 pcs CREE brand LED are used for each fence pole light, the distance between two lights is 2m;



four-lane scene/ equiluminous chart (illuminance)

reseau point 10x9			unit LX, ratio 1 : 85	
average illuminance[LX]	minimum illuminance [LX]	maximum illuminance [LX]	minimum illuminance/ average illuminance	minimum illuminance/ maximum illuminance
61	42	84	0.679	0.495

reseau point 10x12			unit LX, ratio 1 : 119	
average illuminance[LX]	minimum illuminance [LX]	maximum illuminance [LX]	minimum illuminance/ average illuminance	minimum illuminance/ maximum illuminance
43	18	86	0.410	0.208